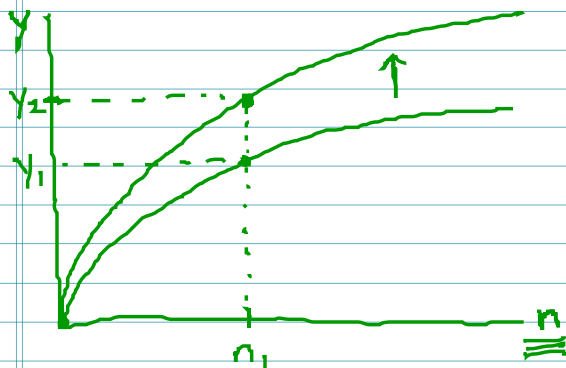
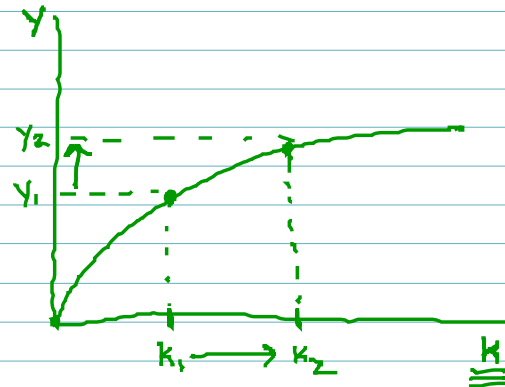


Production Function: Increasing Capital Stocks.



Increase in capital leads to an increase in output.

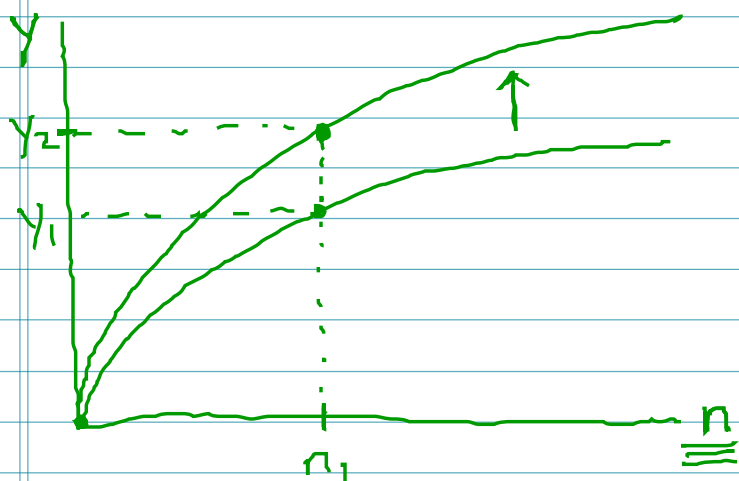
Upward shift in the production.



Increase in capital leads to an increase in output.

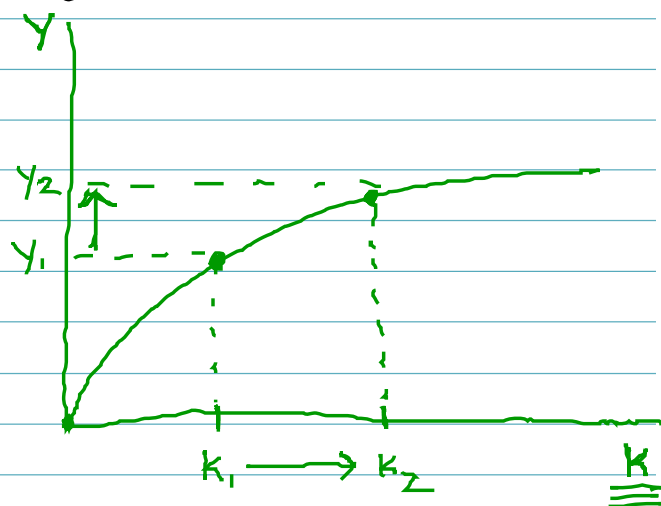
Movement along production func.

Production Function: Increasing Capital Stock.



Increase in capital leads to an increase in output.

Upward shift in the production.



Increase in capital leads to an increase in output.

Movement along production func