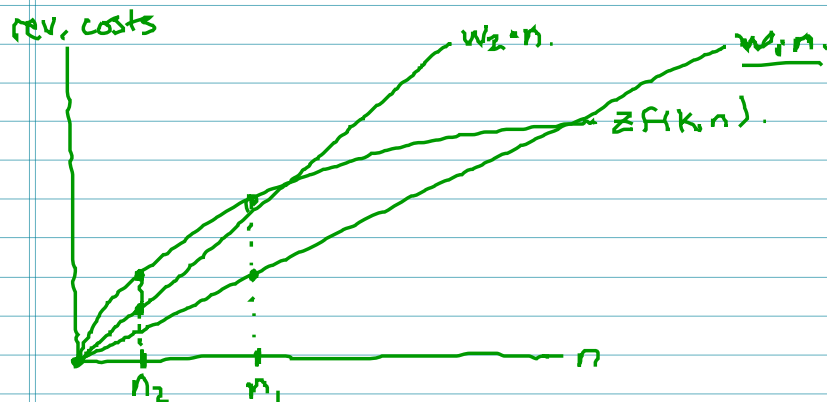
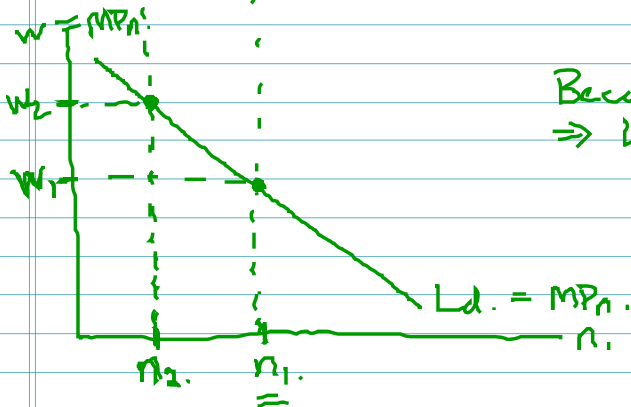


## Demand function for Labor.

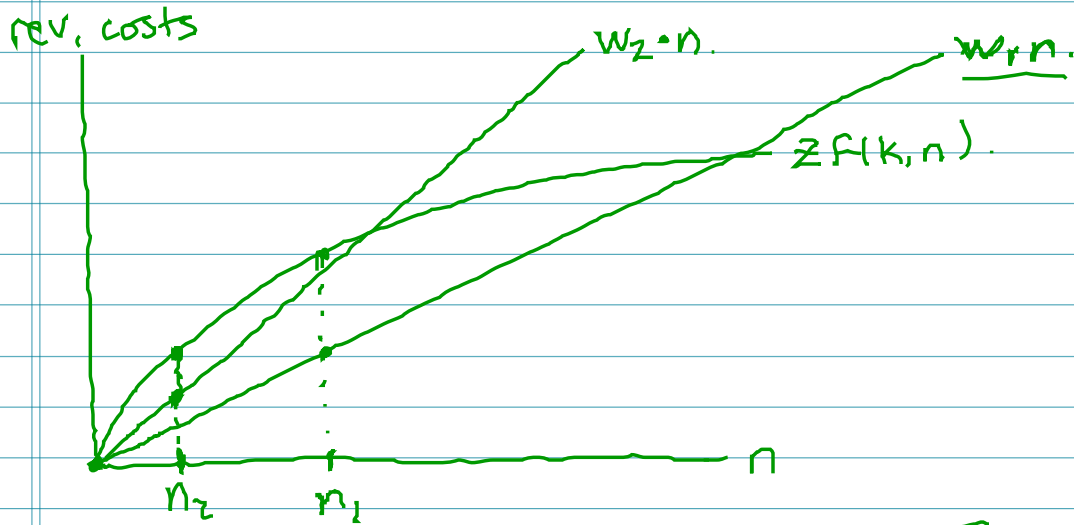


Suppose wage increases to  $w_2$ .

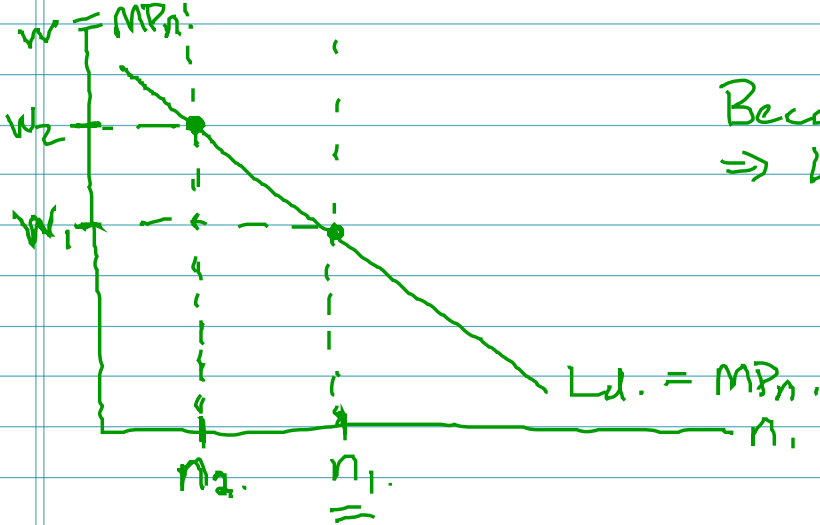
Because  $MP_n = w$ .  
 $\Rightarrow$   $L_d$  is  $MP_n$ .



# Demand function for Labor.



Suppose wage increases to  $w_2$ .



Because  $MP_n = w$ .  
 $\Rightarrow$   $L_d$  is  $MP_n$ .